

Instructions for taking Adapt test

You need to use Firefox browser <https://www.mozilla.org/en-US/firefox/new/>, please follow these instructions to enable Shockwave Flash which is required to run the assessment.



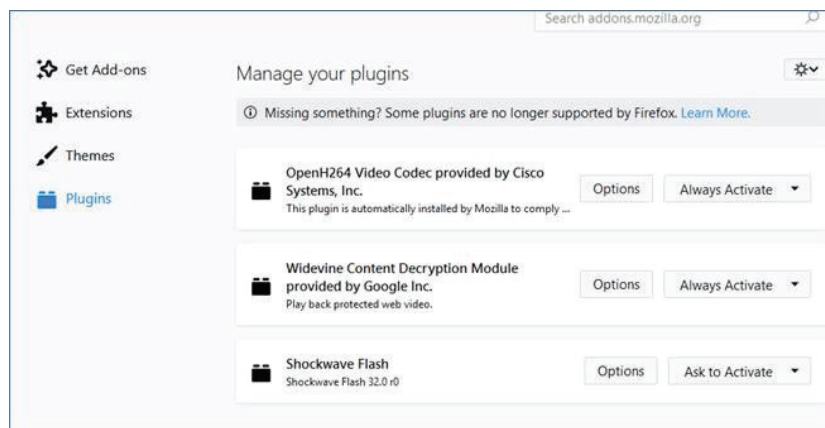
Press Ctrl + Shift + A in Firefox to show your browsers 'add-ons'.



Choose Plugins.



Ensure you have Shockwave Flash.



If you do not see Shockwave Flash in your plugins then you will need to download it onto your computer. Below is a link to download it if you need to: <https://get.adobe.com/shockwave/otherversions/> – you just need to select the type of device you have and choose to download the full version.

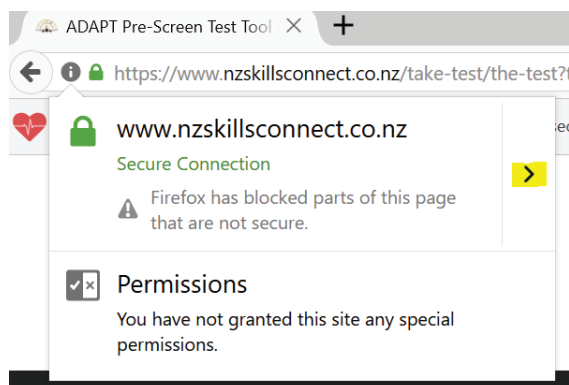


Once installed, set to “ASK TO ACTIVATE”.

When you open the link to continue the test please do not click the take the test button highlighted in gold as it will take you back to sign up again.



Instead please go to the green lock icon. Click that and then click the arrow as highlighted below:



Select the option to 'disable protection for now', The browser will automatically reload the page and will show the test.